

AED Plan

Camp Name: East Fishkill Soccer Club Inc.

Date: 5/20/24

Prepared By: Malcolm Gatherer

Title: East Fishkill Soccer Club

Phone number: TBD

Email Address: TBD

Signature:

All regulated children’s camps are required to provide an automated external defibrillator (AED) or describe reasonable access to an AED at the camp. Additionally, each camp is required to have one or more staff possessing an acceptable certificate of training in the operation of an AED and have an implementation plan. Public Health Law Section [3000-F](#) requires AED implementation plans be done in accordance with the requirements and protections of PHL Section [3000-B](#). For guidance about complying with this section of PHL, please see Bureau of Emergency Medical Services [Policy Statement 09-03](#). The Department expects to update this policy so if this link is no longer functional, please check the [BEMS Policy Statements website](#) or contact your [Regional Emergency Medical Services Council](#).

Completion of the following information and attachment of the equipment checklist and the protocols for AED use during cardiac emergencies as specified below satisfies the implementation plan requirements for camps. Please submit the completed plan to the [local health department or State District Office](#) that has jurisdiction in the county where the camp is located for review.

A copy of the approved plan must be maintained at the camp.

For Health Department Use Only

Approved: Yes No

Reviewer:

Date:

Comments:

IMPLEMENTATION PLAN

Develop a cardiac emergency response plan that addresses the following. The American Heart Association has resources and templates for developing a cardiac emergency response plan available at <https://cpr.heart.org/en/training-programs/cardiac-emergency-response-plan-cerp>.

1. How will emergency medical services, e.g., 911, be contacted during an emergency?
2. How will CPR-trained staff will be summoned in an emergency?
3. How will the AED be accessed in an emergency?

If the camp uses an AED that is provided by the facility or location where the camp operates, it is recommended to check with the facility for protocols for the use of their AED during cardiac emergencies and tailor a plan to their camp.

AUTOMATED EXTERNAL DEFIBRILLATOR (AED) LOCATION AND ACCESS

All camps are required to possess or describe reasonable access to at least one AED at the location the camp is operated.

1. Indicate how an AED is provided and accessible at the camp:
 - Provided by camp
 - Provided by the facility or location where the soccer club activities are held. An AED is accessible to soccer club members at all times. Two AED's are accessible on both sides of our soccer complex.
2. How many AEDs are provided on-site?

At the Rte 52 complex two (2) AED(s) will be present; one (1) on the west side of the complex, one (1) on the east side of the complex.
3. Specify the locations of AED(s) at the camp or at the facility/location where the camp can access the AED. If the AED(s) are provided by the facility/location, describe how the camp will access the AED(s).

RTE 52 Complex: West Field: 1 Public Access Device (PAD) AED is mounted on Pump House; East Field: 1 PAD mounted on front of concession stand building, right side of garage.
4. Describe how to access an AED provided by the camp or the facility/location:

Open PAD AED cabinet (Code is 1925 – which is available to all registered AED/CPR certified coaches/staff), Remove AED and follow instructions provided in AED.

STAFF TRAINED IN AED USE

Camps must have one or more staff possessing an acceptable certificate of training in the operation and use of an automated external defibrillator (AED). Camps may wish to certify multiple people to help ensure someone is always available in an emergency.

Acceptable AED training/certification courses include:

- Certifications for courses held by the training course providers listed in the Bureau of Emergency Medical Services [Policy Statement 09-03](#) that contain AED training.
- CPR certifications specifying AED training listed on the New York State Department of Health's [Cardiopulmonary Resuscitation \(CPR\) Certification Fact Sheet](#).

If a life-threatening event occurs, the closest East Fishkill Soccer Club Staff/Coach(s) will call 911, activating the emergency response system. The Event Staff will be responsible for obtaining the AED. They will either obtain it themselves or instruct a bystander to do so. At this point, certified training will take place with best efforts until Emergency Health Care providers reach the scene and take over.

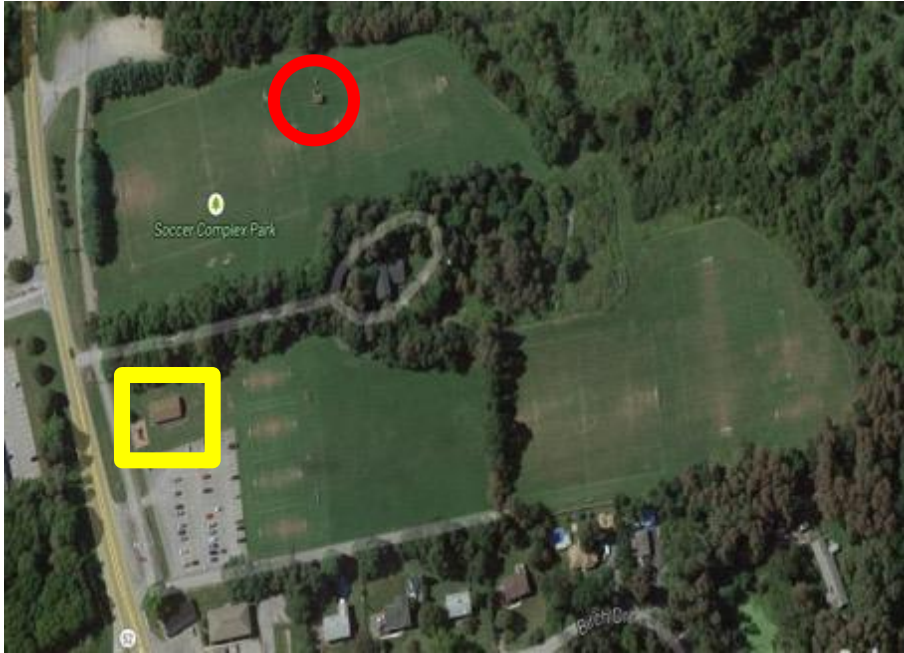
RESPONSE PROTOCOLS AND EQUIPMENT CHECKLIST


If "Provided by camp" was selected in #1 above, complete items 6 and 7.


- 5. Protocols for AED use during cardiac emergencies at the soccer club were developed with the Emergency Health Care Provider. Check box to attest: Affirmed.

- 6. An equipment checklist has been established, including any AED maintenance, inspections and testing specified by the manufacturer. Check box to attest: Equipment are maintained, inspected and tested annually.

ATTACHMENT 1:
RTE 52 Complex:



 West side AED location: Pump House

 East side AED location: Concession Stand



